

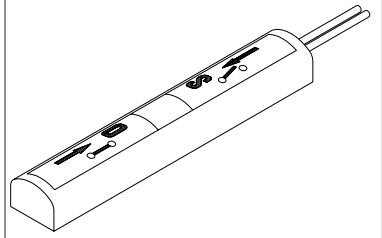
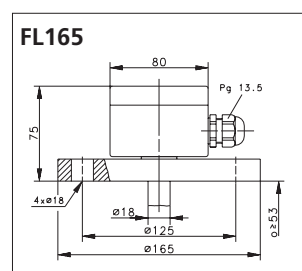


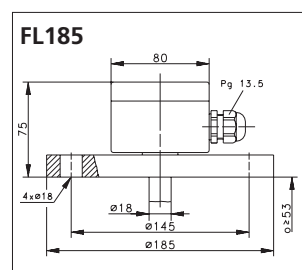
5	6	7	8
Adjustable	Connecting head		Length
VST		/	

Note!
Switching devices without switching modules!
Order separately, please!

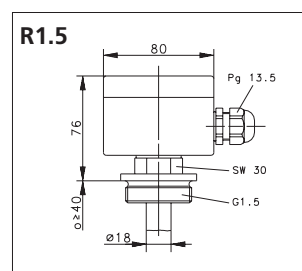
Terminal housing	Length	Switching module	Max. number switching modules/ switching units	
↓	↓			
Version	Other lengths (mm) on request		Normally-closed contact/ normally-open contact	Changeover contact
		Normally-closed contact/ normally-open contact Changeover contact	Lengths 250 mm 500 mm 750 mm 1000 mm	Lengths 250 mm 500 mm 750 mm 1000 mm



FL165	250 / 500 / 750 / 1000	491.0007.069	491.6007.075	2 / 3 / 4 / 4	2 / 3 / 3 / 3
	250 / 500 / 750 / 1000	491.0007.069	491.6007.075	2 / 3 / 4 / 4	2 / 3 / 3 / 3
	250 / 500 / 750 / 1000	491.0007.069	491.6007.075	2 / 3 / 4 / 4	2 / 3 / 3 / 3



FL185	250 / 500 / 750 / 1000	491.0007.069	491.6007.075	2 / 3 / 4 / 4	2 / 3 / 3 / 3
	250 / 500 / 750 / 1000	491.0007.069	491.6007.075	2 / 3 / 4 / 4	2 / 3 / 3 / 3
	250 / 500 / 750 / 1000	491.0007.069	491.6007.075	2 / 3 / 4 / 4	2 / 3 / 3 / 3




R1.5	250 / 500 / 750 / 1000	491.0007.069	491.6007.075	2 / 3 / 4 / 4	2 / 3 / 3 / 3
	250 / 500 / 750 / 1000	491.0007.069	491.6007.075	2 / 3 / 4 / 4	2 / 3 / 3 / 3
	250 / 500 / 750 / 1000	491.0007.069	491.6007.075	2 / 3 / 4 / 4	2 / 3 / 3 / 3

Adjustable float switches

Type code

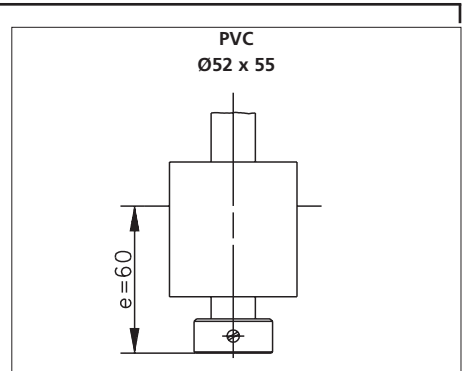
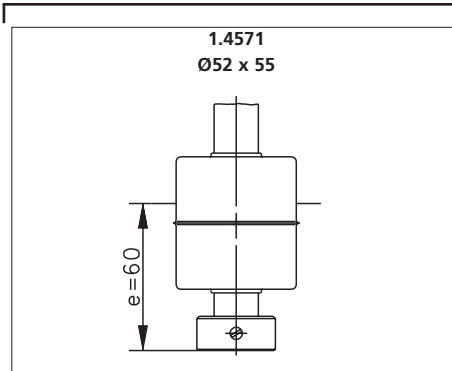
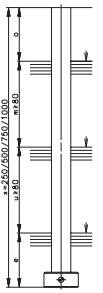
Ordering examples
s. page 222

Position	1	2	3	4
Version	Magnetic float switch	Output type reed contact	Combination switching tube/floats	
Type	M	A		-

Min./max. dimensions

Combination switching tube/float
(technical data see page 234 ff)

Sensing distances for falling levels





1.4571 / G-Al Si 12	1.4571	N	V
—	MS 63	—	—
PVC / Polyester	PVC	—	D



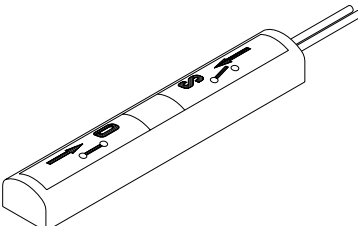
G-Al Si 12	1.4571	N	V
G-Al Si 12	MS 63	P	L
G-Al Si 12	PVC	—	D

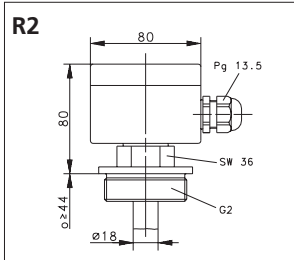


G-Al Si 12	1.4571	—	—
G-Al Si 12	MS 63 protect.: CuZn37	P	L
G-Al Si 12	PVC	—	—

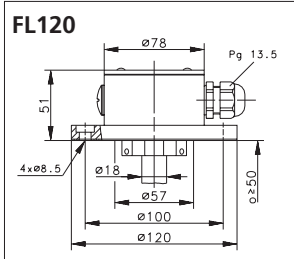
5	6	7	8
Adjustable	Connecting head		Length
VST		/	

Note!
Switching devices without switching modules!
Order separately, please!

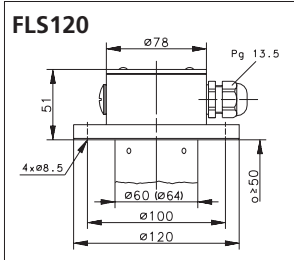
Terminal housing	Length	Switching module	Max. number switching modules/ switching units	
↓	↓			
Version	Other lengths (mm) on request		Normally-closed contact/ normally-open contact	Changeover contact
			Lengths	Lengths
		Normally-closed contact/ normally-open contact Changeover contact	250 mm 500 mm 750 mm 1000 mm	250 mm 500 mm 750 mm 1000 mm



250 / 500 / 750 / 1000	491.0007.069	491.6007.075	2 / 3 / 4 / 4	2 / 3 / 3 / 3
250 / 500 / 750 / 1000	491.0007.069	491.6007.075	2 / 3 / 4 / 4	2 / 3 / 3 / 3
250 / 500 / 750 / 1000	491.0007.069	491.6007.075	2 / 3 / 4 / 4	2 / 3 / 3 / 3



250 / 500 / 750 / 1000	491.0007.069	491.6007.075	2 / 3 / 4 / 4	2 / 3 / 3 / 3
250 / 500 / 750 / 1000	491.0007.069	491.6007.075	2 / 3 / 4 / 4	2 / 3 / 3 / 3
250 / 500 / 750 / 1000	491.0007.069	491.6007.075	2 / 3 / 4 / 4	2 / 3 / 3 / 3



250 / 500 / 750 / 1000	491.0007.069	491.6007.075	2 / 3 / 4 / 4	2 / 3 / 3 / 3
250 / 500 / 750 / 1000	491.0007.069	491.6007.075	2 / 3 / 4 / 4	2 / 3 / 3 / 3
250 / 500 / 750 / 1000	491.0007.069	491.6007.075	2 / 3 / 4 / 4	2 / 3 / 3 / 3