

# Technical Data

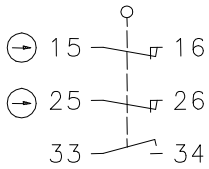
## Safety switch

### Series SKI – with separate actuator

Description **SKI-UV15Z FI50 M3**

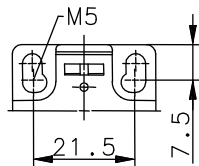
Article number **6016869145**

#### Operating symbol

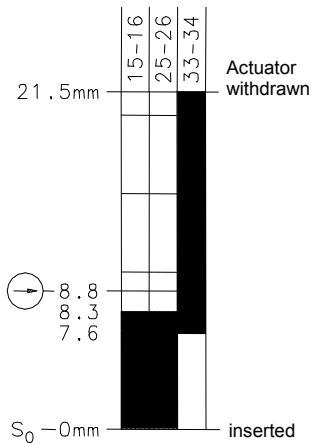


Fixed positioning for safety applications.

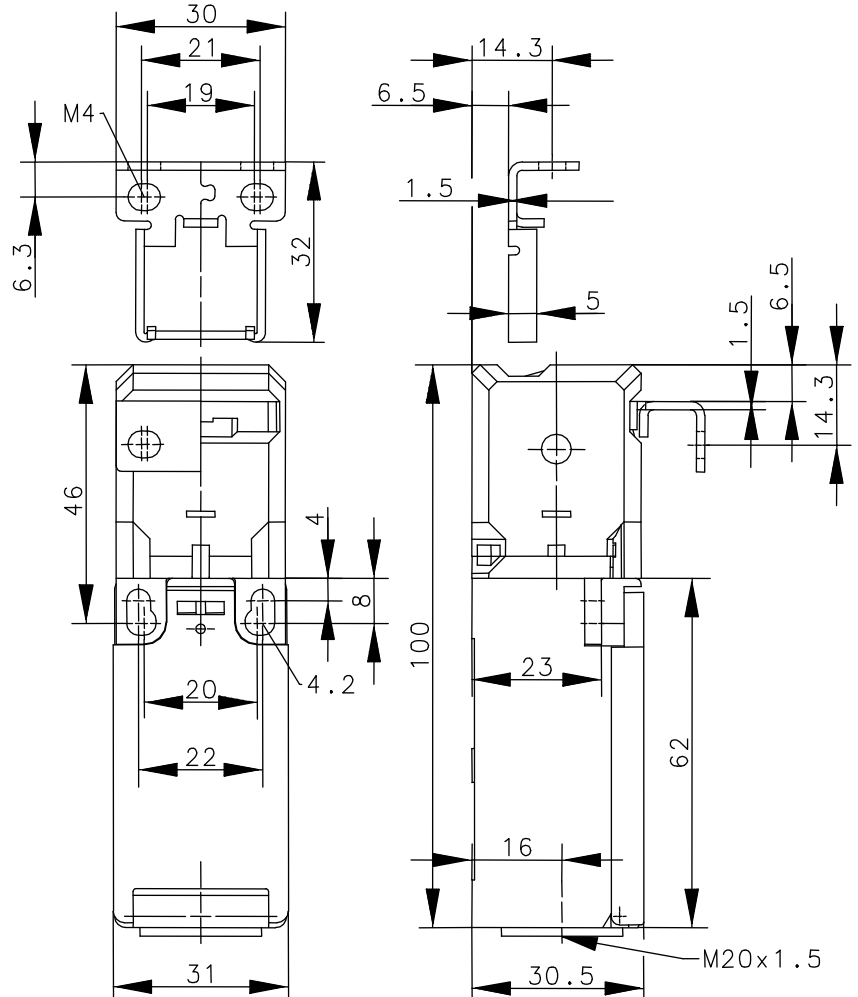
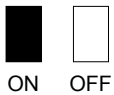
Mounting screw according to DIN 912 M5



#### Operating diagram



**Tolerances**  
 Operating point:  $\pm 0,25\text{mm}$ ;  
 Operating force:  $\pm 10\%$



#### Electrical data

Rated insulation voltage	$U_i$	250 V AC
Conv. thermal current	$I_{the}$	5 A
Utilization category		AC-15, $U_e/I_e$ 240 V/1,5 A
Direct opening action	$\ominus$	according to IEC/EN 60947-5-1, Annex K
Short-circuit protective device		Fuse 6 A gL/gG
Protection class		II, totally insulated

This document will not become the contractual basis; the details included herein do not constitute any descriptions of expected conditions, so that warranties/claims for defects on account of possible variations of the actual qualities from the qualities described herein are explicitly excluded. All rights reserved. Specifications subject to change without notice!

Date of issue : 03.09.2008 / Page 1 of 2  
 Document: 6016869145\_en.doc/ Last update: 2 / 2521-08

# Technical Data

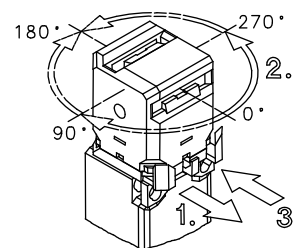
## Safety switch

Mechanical data	
Enclosure	Thermoplastic, glass fibre reinforced (UL94-V0)
Cover	Thermoplastic, glass fibre reinforced (UL94-V0)
Actuator	Separate actuator (metal)
Extraction force	50 N
Ambient air temperature	-30°C ... +80°C
Contact type	2 Öffner, 1 Schließer (Zb)
Mechanical life	1 x 10 <sup>6</sup> switch operations
Integrated actuator holding force	1 x 10 <sup>5</sup> switch operations
Switching frequency	≤ 30 / min.
Assembly Safety switch	2 x M4
Actuator	2 x M5
Connection	6 screw connections (M3)
Conductor cross-sections	Solid: 0,5 ... 1,5 mm <sup>2</sup> Litz wire with ferrules: 0,5 ... 1,5 mm <sup>2</sup>
Cable entrance	1 x M20 x 1,5
Weight	≈ 0,12 kg
Installation position	Operator definable
Protection type	IP65 nach IEC/EN 60529

### Actuation

To achieve the 8 different actuator points please follow the next instructions

- (1) pull fixing clamp
- (2) turn actuator
- (3) push fixing clamp



Standards
VDE 0660 T100, DIN EN 60947-1, IEC 60947-1
VDE 0660 T200, DIN EN 60947-5-1, IEC 60947-5-1
GS-ET 15

EU Conformity
CE

Approvals
BG
cCSAus B300 (same polarity)

### Notes

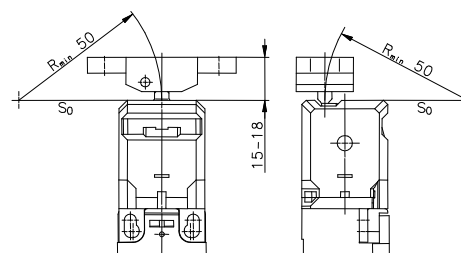
The degree of protection (IP code) specified applies solely to a properly closed cover and the use of an equivalent cable gland with adequate cable.

The switch may not be used as a mechanical stop.

Radial actuation may reduce the mechanical life.

The min. radius refers to a pivot at the top of the cap (S<sub>0</sub>).

Tapped holes not in use must be closed with blind plugs.



This document will not become the contractual basis; the details included herein do not constitute any descriptions of expected conditions, so that warranties/claims for defects on account of possible variations of the actual qualities from the qualities described herein are explicitly excluded. All rights reserved. Specifications subject to change without notice!