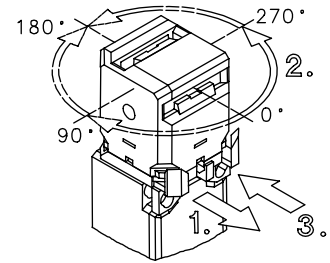
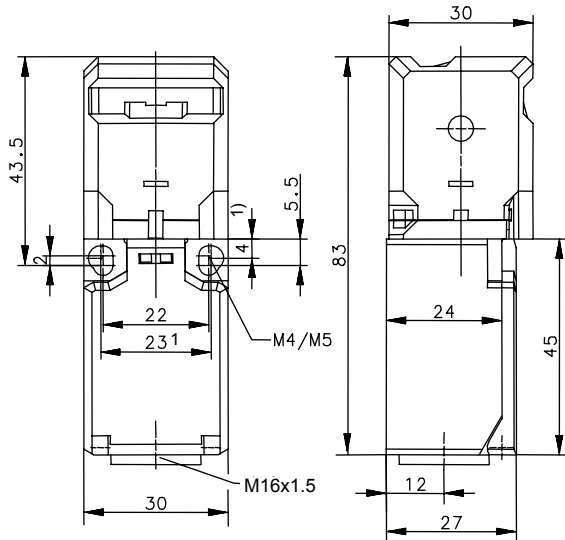


Series SKT – with separate actuator

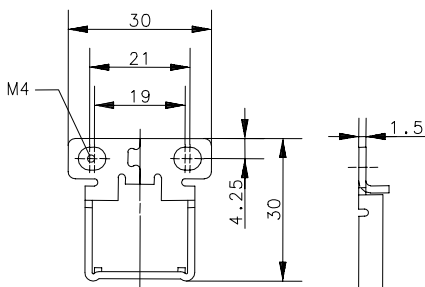
Safety switch



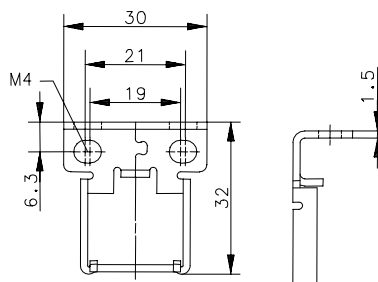
1. draw clasp out
2. turn actuator head (4 x 90° rotation)
3. press-on clasp

¹⁾ Dimensions for fixed positioning with screws M5 (for safety applications)

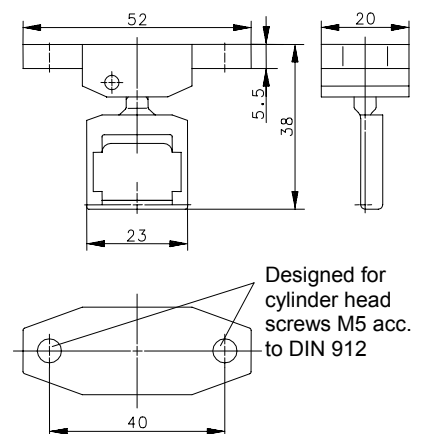
Actuator M2



Actuator M3




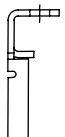
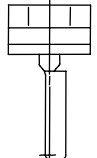
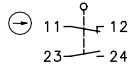
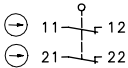
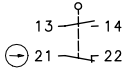
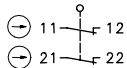
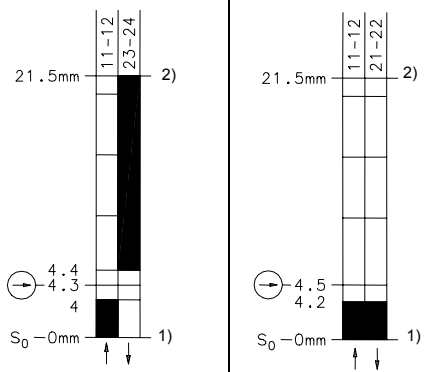
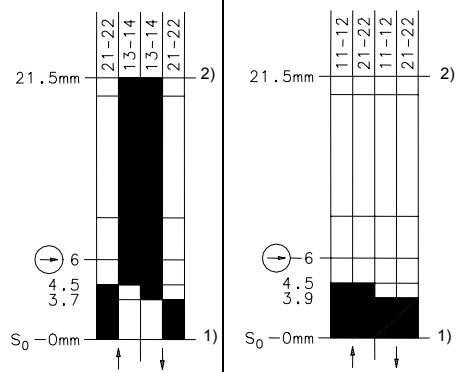


Actuator MRU



For a tamperproof mounting of the actuators M2 and M3 the supplied one-way screws of M4X8 size shall be used.

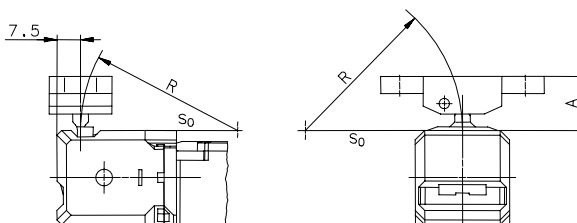
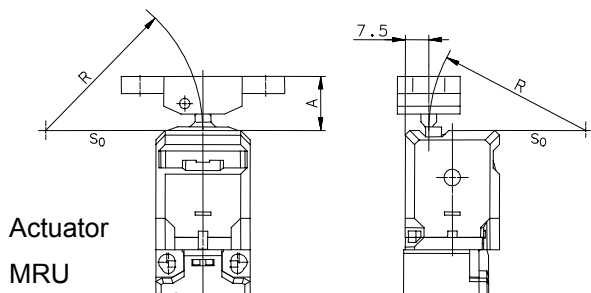
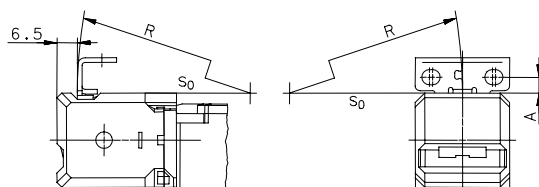
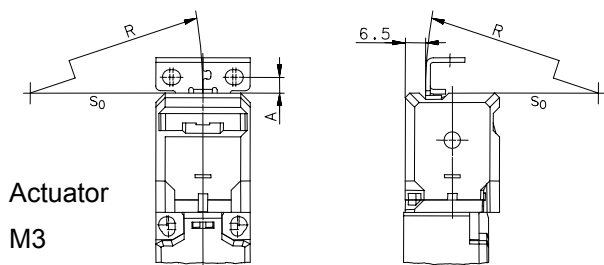
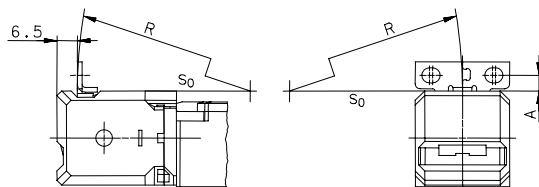
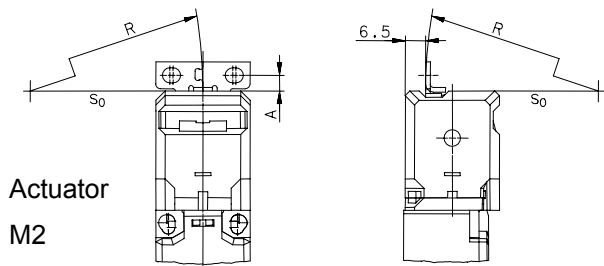
This document will not become the contractual basis; the details included herein do not constitute any descriptions of expected conditions, so that warranties/claims for defects on account of possible variations of the actual qualities from the qualities described herein are explicitly excluded. All rights reserved. Specifications subject to change without notice!

Date of issue: 18.06.2008 / Page 1 of 4
Document : 7100005_en / Last update: 3 / 2338-08

Actuator	Article number				Option
M2 	6016419114	6016469116	6016409115	6016469117	Standard
	—	—	—	—	FI50
	—	—	—	—	FE
M3 	6016419059	6016469066	6016409060	6016469067	Standard
	6016419146	6016469148	6016409150	—	FI50
	6016419138	6016469147	6016409149	—	FE
MRU 	—	—	6016409093	—	Standard
	—	—	—	—	FI50
	—	—	—	—	FE
Contact type	1 NC 1 NO	2 NC	1 NO 1 NC	2 NC	Contact type
Operating symbol	U1Z  Slow-action	A2Z  Slow-action	SU1Z  Snap-action	SA2Z  Snap-action	Operating symbol
Operating diagram	 Operating force 10 N ±10 %	 Operating force 12 N ±10 %	Operating diagram		
1) Actuator inserted 2) Actuator withdrawn  On  Off	FI50 Integrated actuator holding force (50 N) FE Integrated forced ejection function				

This document will not become the contractual basis; the details included herein do not constitute any descriptions of expected conditions, so that warranties/claims for defects on account of possible variations of the actual qualities from the qualities described herein are explicitly excluded. All rights reserved. Specifications subject to change without notice!

Radial actuation / dimensions



Actuator	Standard	FE	FI50
M2	5mm ≤ A ≤ 8mm R ≥ 150mm	—	—
M3	5mm ≤ A ≤ 8mm R ≥ 150mm	5mm ≤ A ≤ 8mm R ≥ 150mm	A = 5mm R ≥ 150mm
MRU	15mm ≤ A ≤ 18mm R ≥ 50mm	—	—

The min. radius refers to a pivot at the top of the cap (S₀)

This document will not become the contractual basis; the details included herein do not constitute any descriptions of expected conditions, so that warranties/claims for defects on account of possible variations of the actual qualities from the qualities described herein are explicitly excluded. All rights reserved. Specifications subject to change without notice!

Date of issue: 18.06.2008 / Page 3 of 4
Document : 7100005_en / Last update: 3 / 2338-08

Technical Data

Safety switch

Electrical data		
Rated insulation voltage	U_i	250 V
Conv. thermal current	I_{the}	10 A
Rated operational voltage	U_e	240 V AC; 250 V DC
Utilization category		AC-15, U_e/I_e 240 V / 3 A; DC-13, U_e/I_e 250 V / 0,27 A
Direct opening action	⊖	acc. to IEC/EN 60947-5-1, annex K
Short-circuit protective device		6 A gL/gG
Protection class		II, totally insulated

Mechanical data		
Enclosure		PBT
Cover		PA 6.6
Actuator (M2, M3, MRU)		Stainless steel
Ambient air temperature		-30 °C ... +80 °C
Mechanical life	Standard	1 x 10 ⁶ switch operations
	F150, FE	1 x 10 ⁵ switch operations
Switching frequency		≤30/min
Assembly	Safety switch	2 screws M4 or M5
	Actuator	2 screws M4 (supplied)
	M2, M3	2 screws M4 (supplied)
	MRU	2 screws M5
Connection		Screw connection M3,5
Conductor cross-sections		Solid: 0,5 ... 1,5 mm ² Litz wire with ferrules: 0,5 ... 1,5 mm ²
Cable entrance		M16x1,5
Weight with M2-, M3-Actuator		≈0,09 kg
Weight with MRU- Actuator		≈0,13 kg
Protection type		IP65 acc. to IEC/EN 60529

Standards	
	VDE 0660 T100, DIN EN 60947-1, IEC 60947-1
	VDE 0660 T200, DIN EN 60947-5-1, IEC 60947-5-1

EU Conformity	CE

Approvals	
	BG (without 60164009093)
	cCSA _{US} A300, B300 (same polarity)

Notes

Radial actuation may reduce the mechanical life.
 Unused actuator entry slot must be covered by the plug.
 The switch may not be used as a mechanical stop.

The degree of protection (IP code) specified applies solely to a property closed cover and the use of an equivalent cable gland with adequate cable.

This document will not become the contractual basis; the details included herein do not constitute any descriptions of expected conditions, so that warranties/claims for defects on account of possible variations of the actual qualities from the qualities described herein are explicitly excluded. All rights reserved. Specifications subject to change without notice!

Date of issue: 18.06.2008 / Page 4 of 4
 Document : 7100005_en / Last update: 3 / 2338-08